




COMMON SENSE:

# All Your RCM on One Platform



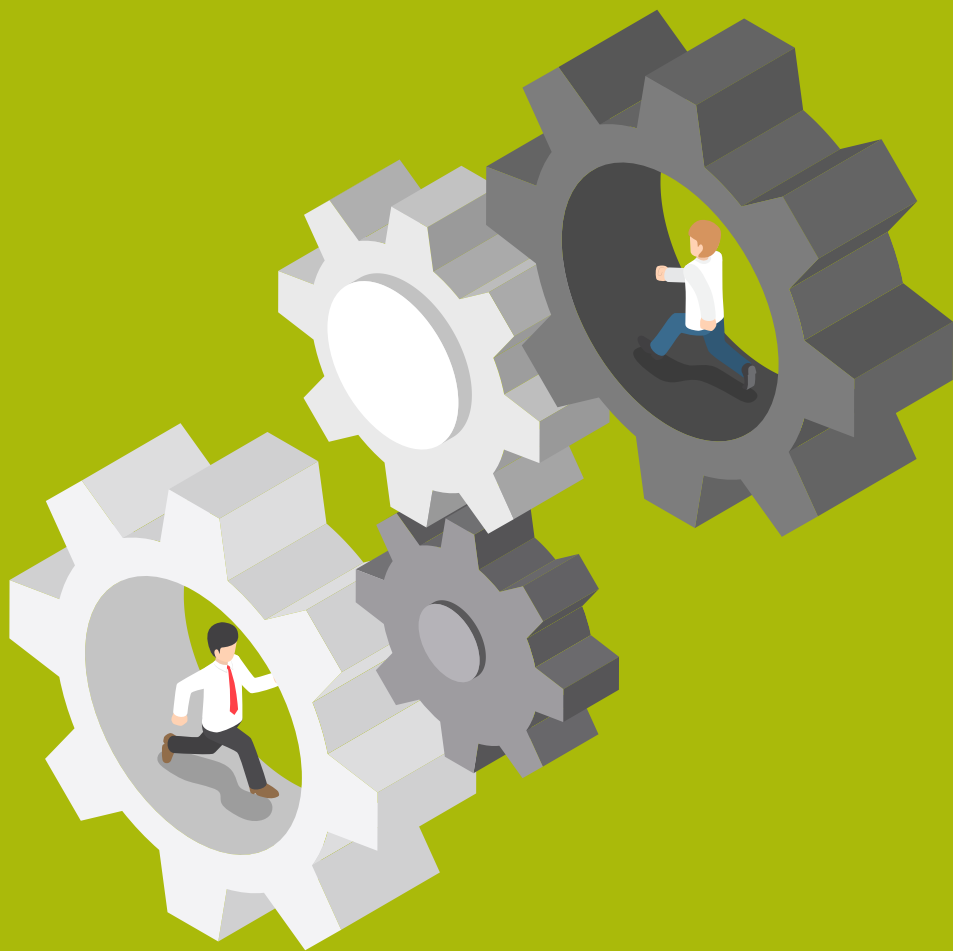
When it comes to managing your revenue cycle, having trust in your process and confidence in your partners is key. After all, it's your financial health at stake!

Once you've done the hard work of finding an **industry-leading vendor** you can trust, it makes sense to bring all your revenue cycle workflow together in **one place, on one platform**, where you can take full advantage of integration and simplicity. To discover how this decision can benefit you, read on 

## DESKTOP HARMONY

When you work on a single platform, all your RCM applications work as a team because they are built to complement one another. Working in one set of tools **gives your operation greater efficiency** since your front and back offices are always on the same page. A single platform offers valuable insight into the metrics of the organization. You can check your A/R status, **get a snapshot of workflow 24/7**, and enjoy more robust and accurate reporting!





## FRIENDLY TO OTHERS

You may be wondering whether consolidating the RCM workflow will affect other software you are using now or may want to use in the future. With the right vendor, you can be confident that your electronic health records (EHR) and any billing software used will be **completely compatible**. This neutral status for your RCM workflow means having **total flexibility** to use any EHR or billing software you please. You won't miss a beat.

## PASSWORD SIMPLICITY

You can end the password madness that comes with multiple sets of non-integrated login credentials. The best RCM platform allows access to all critical functions quickly and efficiently in one place. You can **log in once** and get right down to business! An ideal platform works with **multiple payers and patients** in the same session. You can avoid bouncing from screen to screen and portal to portal, wasting precious minutes that turn into hours.





## CURRENT KNOWLEDGE

Whether you need to stay on top of CMS-mandated updates, or be informed promptly of service enhancements, partner with a company who helps you **stay compliant and up to speed** on industry changes. In the rapidly evolving worlds of healthcare and technology, timely and accurate information is essential to riding the waves of change.

## ONE TECHNICAL RESOURCE

For your technical support questions, you need trustworthy, knowledgeable experts who know all your applications and how they work together. Having a single dependable vendor gets you reliable technical experts who work with you to figure out any glitches. You won't bounce between vendors to find the source of an issue. **The buck stops with your full-service partner.** Look for a vendor who doesn't charge you an annual maintenance fee or contract.





## START-TO-FINISH EXPERTISE

With all your services delivered by the leading RCM vendor, you can count on **access to experts** all the way through the relationship. Start with a personalized demo and get your questions answered throughout the decision-making process. **Implementation is fast and easy.** A dedicated technical expert should walk you through the setup. In a perfect world, you've chosen a partner who offers training and free webinars on an ongoing basis. This lets you drill deeper into your application features when it's convenient for you.



## BUNDLED PRICING

Your ideal partner will deliver cost savings when you bundle services into one account. The more applications a vendor partner provides, the larger your **price advantage** should be. Bundling services means you can skip the confusion at the end of the month that comes with multiple vendors and payment processes. With the right vendor, you will get one invoice that you can **pay online**, or stick with paper if you prefer. If there's a question about billing, you'll work with a **single point of contact** to get your questions answered.





## WHY ABILITY?

When you are ready to bring your services together on a single superior platform, look for a leading HIPAA-compliant company with **plenty of experience and secure U.S.-based data centers**. ABILITY is trusted by thousands of providers nationwide to process more than a billion transactions every year with its web-based eligibility, claims and workflow tools.

To find out more, [CLICK HERE >>](#)