

Prepared for: Home Health Agency
City: Anytown
2016 Status: HomeCare Elite

999999 Affiliation: Free Standing
State: USA

Report Interpretation Guide

Quality of Care **Your ranking in this domain*:** 62 percentile

- Results are based on data from the eleven outcome measures published on Home Health Compare (HHC) in July 2016 (represents full year 2015 for all measures other than claims-based hospitalization and emergent care rates).

Quality Improvement **Your ranking in this domain*:** 38 percentile

- Results are based on comparing results from the nine outcome measures published on Home Health Compare in July 2016 against results for the same measures published in July 2015.

Patient Experience **Your ranking in this domain*:** 78 percentile

- Results are based on comparing data from the five Home Health CAHPS measures published on Home Health Compare in July 2016 (represents full year 2015).

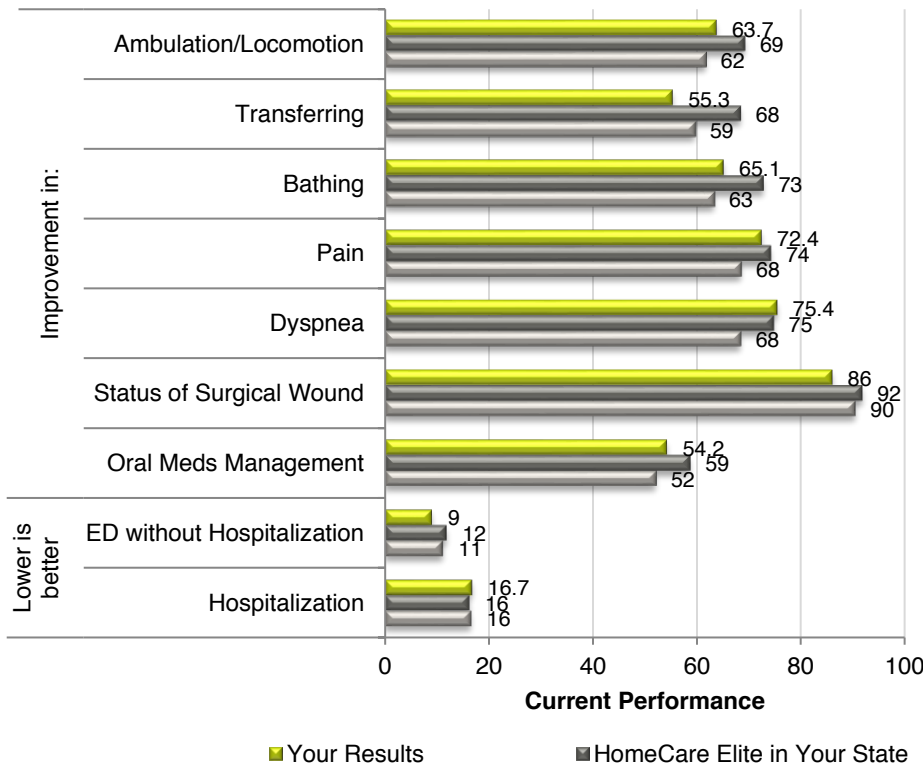
Process Measure Implementation **Your ranking in this domain*:** 69 percentile

- Results are based on comparing data from 11 of the 13 process measures published on Home Health Compare in July 2016 (represents full year 2015).

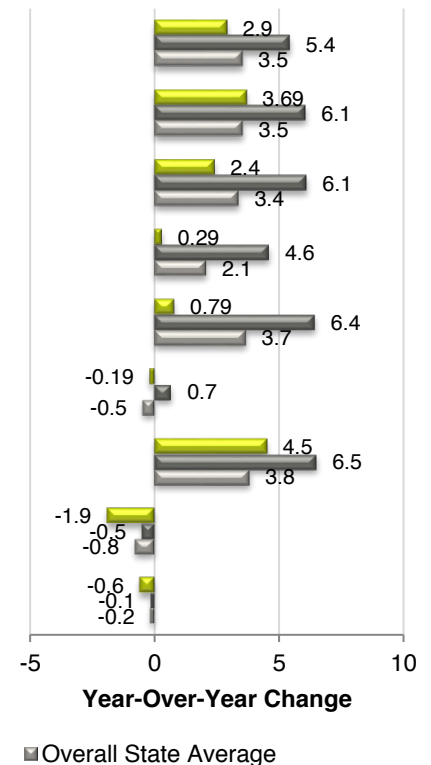
Financial Performance **Your ranking in this domain*:** 35 percentile

- Note - the **maximum** percentile ranking possible in this domain is 35th.
- Results are based on Medicare net income from the CMS Cost Report data published in July 2016.
- Fiscal year 2015 data was used when available; when not, fiscal year 2014 data was used.
- **If NA**, Financial Performance is not part of the facility-based HomeCare Elite model.

Quality of Care



Quality Improvement



30-Day Readmission: Better Than Expected
ED without Readmission: Worse Than Expected

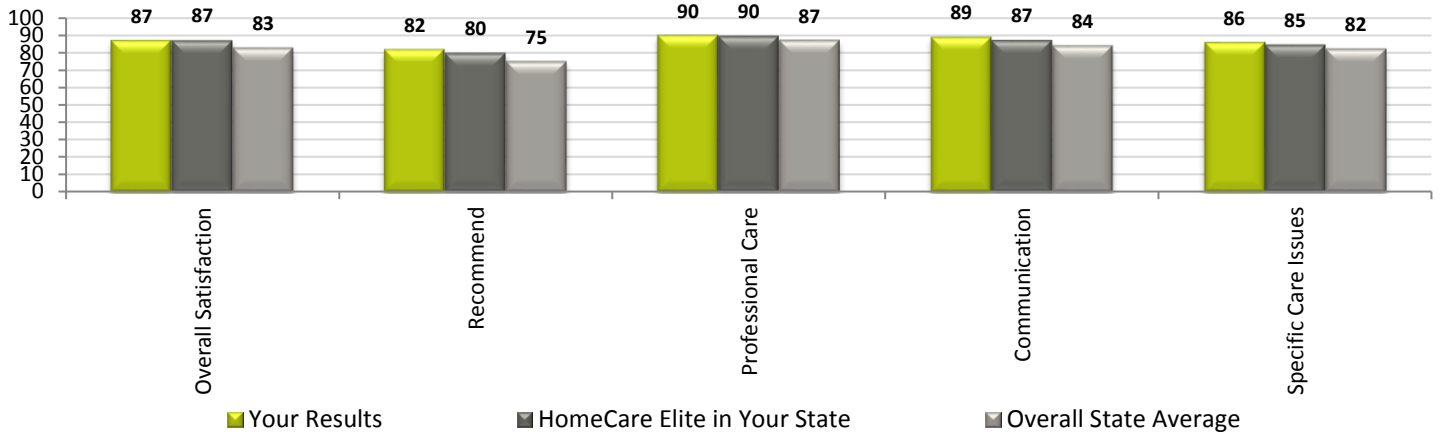
For more information regarding the methodology and data:
abilitynetwork.com/HCE-Methodology

Prepared for: Home Health Agency
 2016 Status: HomeCare Elite

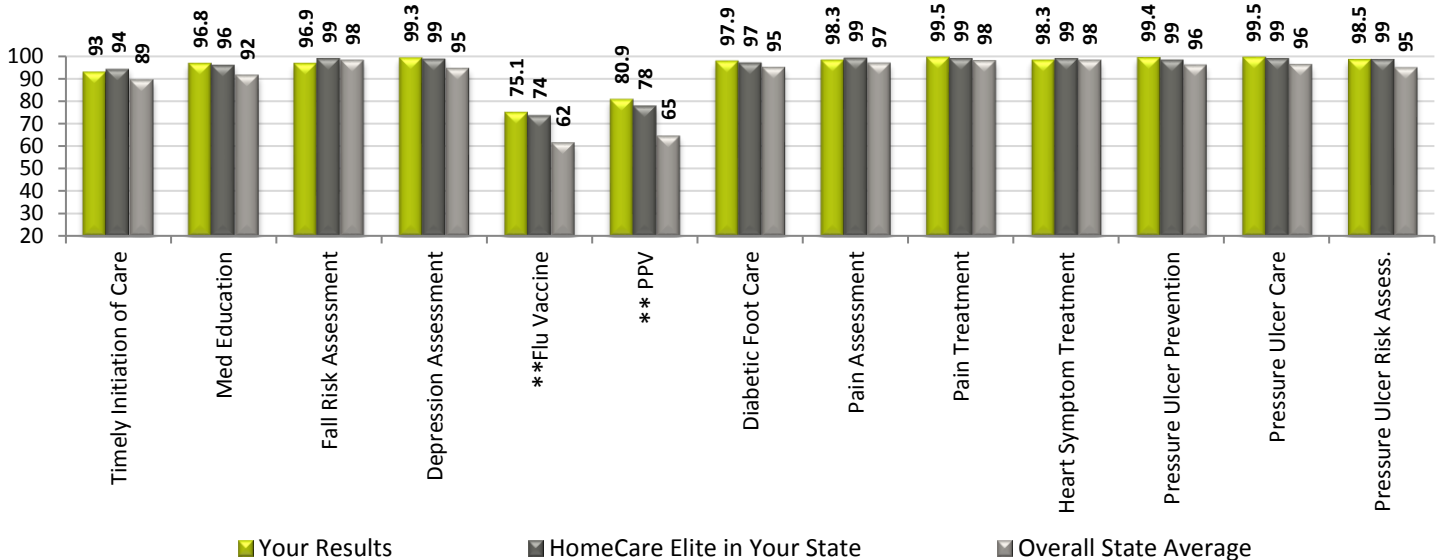
999999

State: USA

Patient Experience



Process Measure Implementation



Quality Consistency

	2011	2012	2013	2014	2015
Composite Outcomes Score Above State Average	+	+	+	+	+

Previous Years' HomeCare Elite Status

	2006	2007	2008	2009	2010	2011	2012	2013	2014	2015
Qualified	No	Yes	Yes	Yes	Yes	Yes	500	100	500	Yes

* The ranking for each domain demonstrates how your cumulative performance across all of the weighted measures included in that domain compares against the nation as a whole. The HomeCare Elite represents the top 25% of agencies nationally. Note, there is no "magic number" for performance in each of the domains that ensures placement on the list, because each domain has its own weighting and because all are included in the final calculation. This may give you a sense of where to focus attention. Given that Quality of Care is most heavily weighted, if you aren't at the 75th percentile or higher in that domain, it is a good place to start.

** Vaccine measures are not included in HomeCare Elite calculations.